
Shed Update

146 Marlborough St

March 2021

Beth & David Gilliland

146 Marlborough St

East Greenwich, RI 02818

401-203-3700

elizabeth.gilliland@gmail.com

gillilanddj@gmail.com

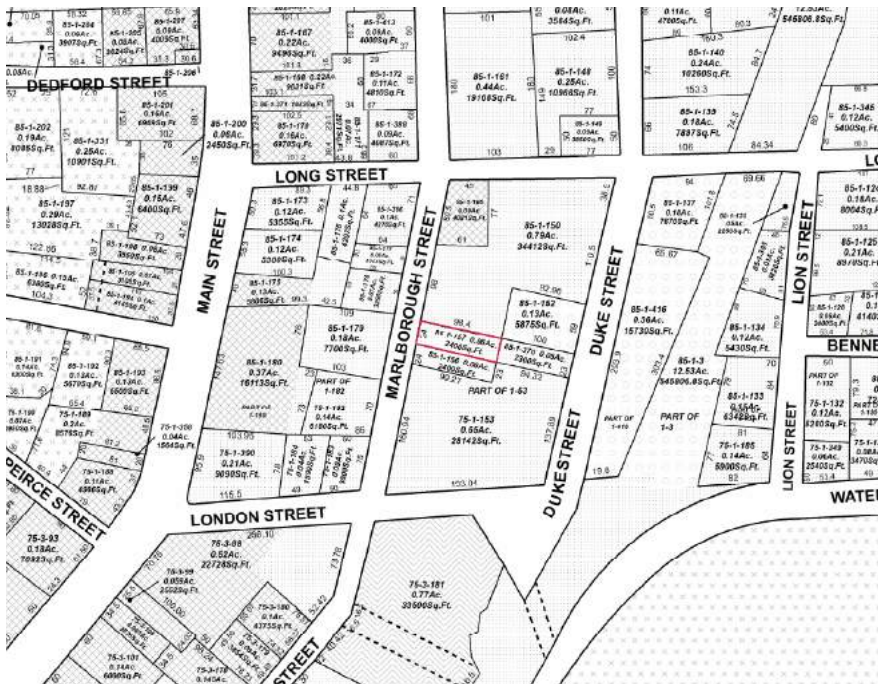


Shed History and Location

According to tax assessments, there has been an outbuilding or shed on the 146 Marlborough Street property since the house was built in the 1850s (parcel 85-1-157). We estimate the current outbuilding is likely from the 1980s when several large renovations were done on the property. We have photos of the shed back to 2009. The structure is located slightly lower than the buildings surrounding it -- it is level with our walk-out basement. This makes it largely invisible from both Marlborough Street and Duke Street. Only the roof is visible from Duke Street.



Aerial view (North at top)



Parcel map for 85-1-157



Aerial view from West



Aerial view from North

Planned Updates

Exterior Updates

- Replace deteriorated double barn doors on North side with inswing french doors; add transom windows
- Remove broken window on South side; add transom windows
- Add two casement windows with transom windows above to West side facing house
- In-kind replacement of rotted siding shingles, add 1x6 band board skirt along bottom, replace corner boards as necessary
- Replace rotted roof fascia and add soffit vents

Interior Updates

- Inside dimensions ~15' x ~13' ~10' wall height
- Add insulation and basic finishing over the 2x4 stud walls and existing poured concrete foundation
- Run electric from house and add small panel + outlets
- Addition of small mini-split HVAC

Current Exterior Photos



North Side (deteriorating doors)



West Side (facing house)



South Side (broken window)



East Side (abuts ~4' high berm between properties)



Front of house; rear of house (with Northeast corner of shed)



View of shed from sidewalks around block (from Northwest; from West; from East)

Conceptual Drawings



South Side (door replacement)



East Side (added windows)



North Side (change out windows)



West Side (no changes - add mini-split)

Door & Window Concept Photos



Current Photos of North, Northwest, and West Sides

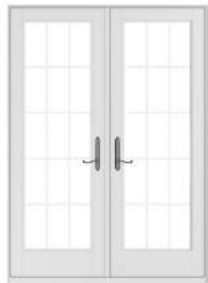


Photo mock-up of North, Northwest, and West Sides (with replacement doors and new windows)

Door Samples



400 SERIES FRENCHWOOD® HINGED PATIO DOOR



Interior



Exterior

Summary

Product ID#	FWH50611
Unit Width	59 1/4"
Unit Height	82 3/8"
Interior Color	White
Glass	Low-E4® Glass
Hardware	Whitmore®, Satin Nickel
Blinds Between Glass	None
Grille Pattern	Colonial
Grille Width	3/4"
Exterior Door Color	White
Exterior Trim Profile	None
Exterior Trim Color	White



WINDOWS

DOORS

STYLE & DESIGN

SUPPORT

FOR PROS

Smooth-Pro™ Fiberglass Exterior Door: 3/4 View 6-Light 1-Panel

Model Overview



PROJECT TYPE

New construction and replacement

MAINTENANCE LEVEL

Minimal

WARRANTY

Lifetime Warranty

COLORS & FINISHES

1 Finish Option
34 Paint Options
11 Stain Options

GLASS

Energy efficient, tinted and privacy.

DIVIDED LITES

Grilles between the glass.

CONSTRUCTION

ADA Requirements
Impact Resistant Doors
Smooth-Pro Construction

PANEL OPTIONS

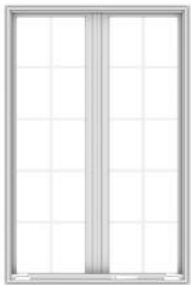
Panel options



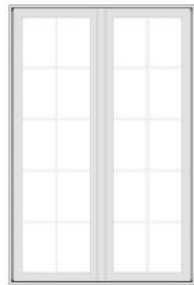
Window Samples



E-SERIES FRENCH CASEMENT WINDOW



Interior



Exterior

Summary

Product ID#	FCMT3450
Unit Width	40"
Unit Height	60"
Interior Color	White
Glass	Low-E4® Glass
Hardware	Crank Handle and Operator Cover, White
Grille Pattern	Colonial
Grille Width	5/8"
Exterior Frame Color	White
Exterior Sash Color	White
Exterior Trim Profile	None



A-SERIES PICTURE WINDOW



Interior



Exterior

Summary

Product ID#	APW5020
Unit Width	59 1/4"
Unit Height	23 1/4"
Interior Color	Vertical Grain Douglas Fir
Glass	Low-E4® Glass
Grille Pattern	Colonial
Grille Width	3/4"
Exterior Color	White
Exterior Trim Profile	None

