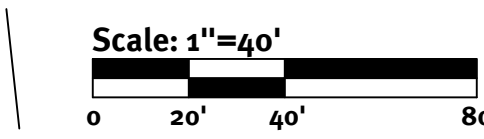
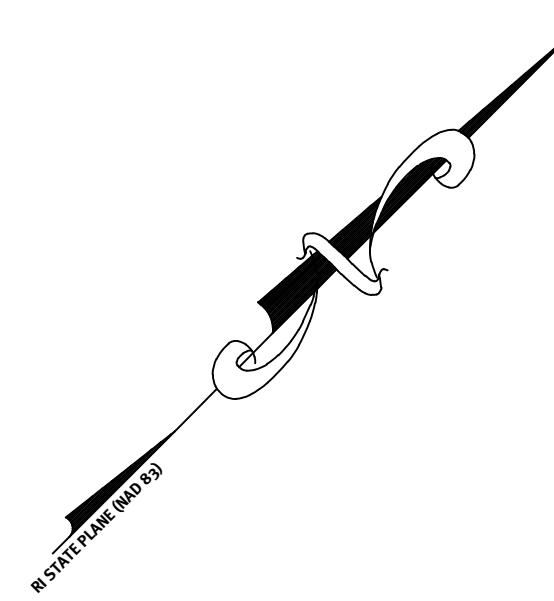
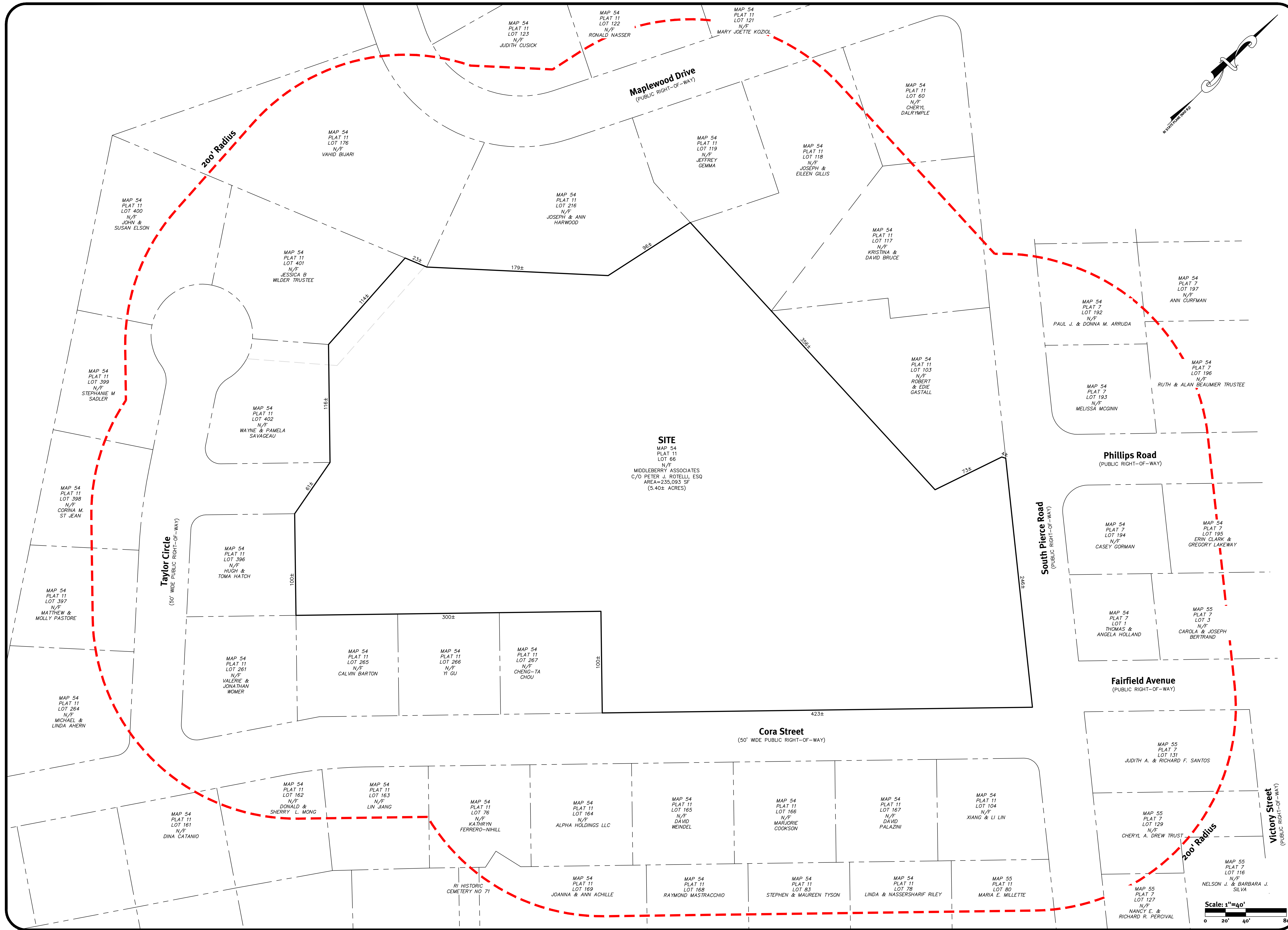


z:\demain\projects\2470-001_south_pierce_road\2470-001_rdm.dwg Plotred: 9/18/2021



DiPrete Engineering
Two Stafford Court Cranston, RI 02920
tel 401-943-1000 fax 401-664-6006 www.diprete-eng.com

Boston • Providence • Newport

This plan set must not be used for construction purposes unless stamped, issued for construction, and stamped by a registered professional engineer of DiPrete Engineering.

The contractor is responsible for all of the means, methods, safety and implementation of this plan and design.

DiPrete Engineering assumes no responsibility for damages incurred due to locations of existing utilities. See Utility Note on sheet 3.

0	09/28/2021	250' Station Map	Design By: D.R.N.
1	Date	Description	By:
2	Drawn By: K.E.D.		

200' Radius Map

Coggeshall Preserve
East Coggeshall, Rhode Island
Assessors Map 54, Plat 11, Lot 66

Prepared for
Philip Ryan Homes Ltd.
816 Middle Road, Unit 6, East Greenwich, Rhode Island 02818
tel 401-742-1616

DE JOB No. 2470-001. Copyright 2020 by DiPrete Engineering Associates, Inc.

SHEET **1** OF 1